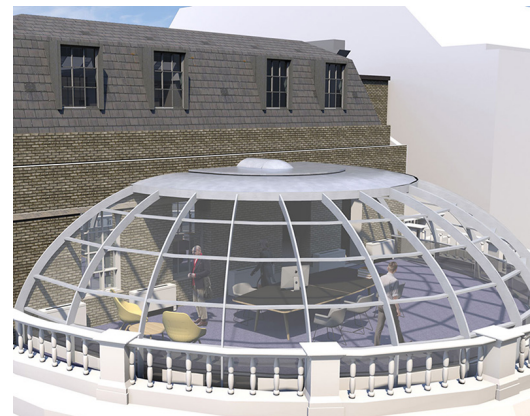
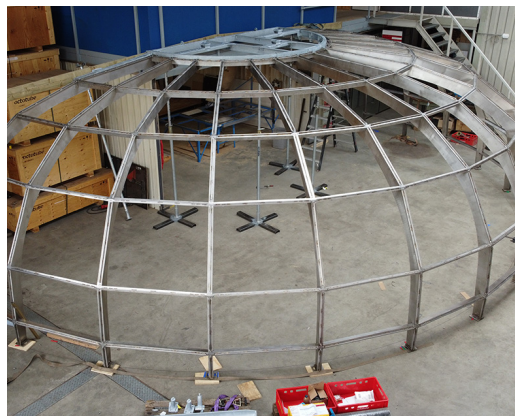
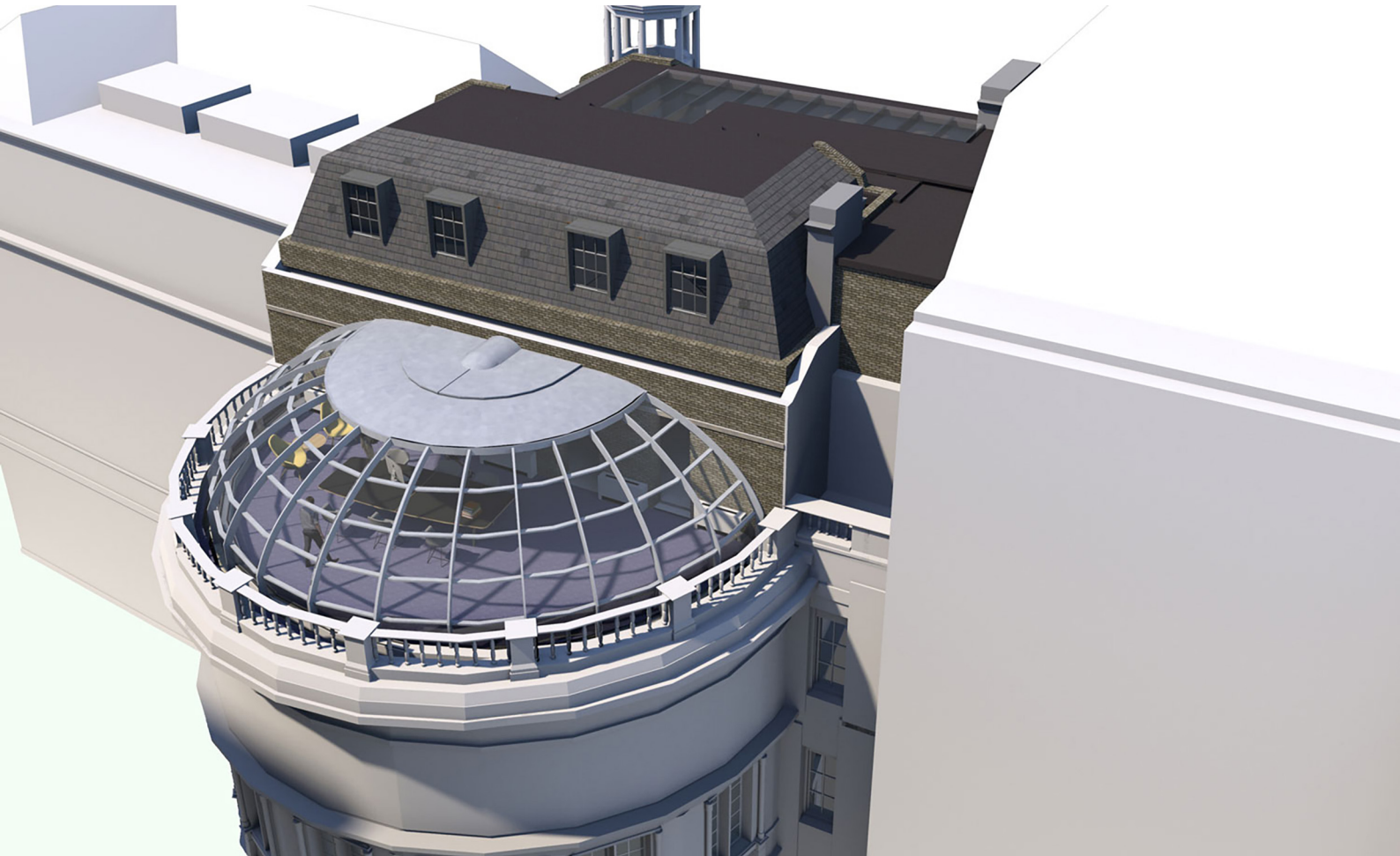


# RUSI WHITEHALL DOME

Architect  
Client  
Location  
Year

CAMPBELL ARCHITECTS  
ROYAL UNITED SERVICES INSTITUTE  
LONDON (UK)  
2022

7660



A half-dome on the roof of the iconic Royal United Services Institute (RUSI) building in the heart of London provides a meeting space with views over Whitehall Gardens and the Ministry of Defense. A striking feature of this glass dome is that the glass panels can be individually adjusted from almost completely transparent to only 10% translucent. This system is completely integrated in the laminated glass which therefore has a thicker composition of 6cm. Some glass panels function as windows that can be opened.

The relatively flat, half-dome has a diameter of 12.5 meters and a height of 4 meters. Its stainless steel construction consists of 15 custom-made curved beams connected with horizontal transoms. The construction is bead-blasted and remains in view. To absorb transverse force and torsion in the cross beams, we hid an 8mm tension bushing pin in the center of the bodies. Three wind braces in the bottom ring, neatly hidden under the window sill, stabilize the construction. The dome has a zinc-finished crown as the capstone.